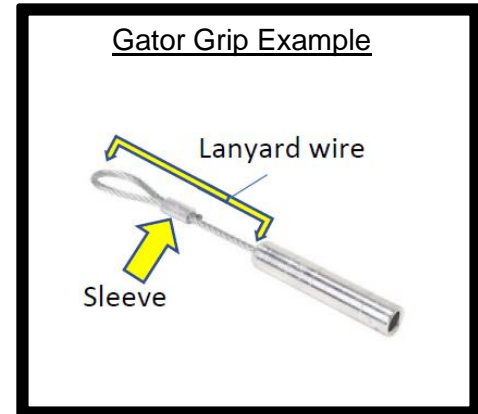


Date: May 17, 2021

Important Quality Issue: Greenlee Gator Grips™ Produced April to Mid-May 2021



Dear Greenlee Customer,

Recently Greenlee has learned that the below listed Gator Grip™ crimp-on electrical cable pulling grip product units produced from April to mid-May 2021 may not have had their sleeve crimped in their manufacturing process. An uncrimped sleeve will not allow the electrical cable pulling process to operate as intended if used. In most uncrimped sleeve cases, the lanyard wire will pull out of the sleeve during installation process of the Gator Grip before the pull begins. To address the matter, Greenlee is issuing this Quality Notice advising all Resellers/Customers to stop the use of any Gator Grips in their inventory, inspect such Gator Grip(s) as shown on page 2 below to determine if the sleeve is correctly crimped, and contact Greenlee to arrange for return of any uncrimped sleeve Gator Grip units. This Quality Letter does not apply to Greenlee basket and set-screw style grips.

List of Gator Grip Crimp-On Pulling Grips Possibly Affected Units:

CAT. NO.	UPC NO.	DESCRIPTION	CAT. NO.	UPC NO.	DESCRIPTION
GG1-1/0XS	783310054696	Grip Assy, 1-1/0 Extra Short	GG400-500XS	783310055075	Grip Assy, 400-500 Extra Short
GG1-1/0S	783310054702	Grip Assy, 1-1/0 Short	GG400-500S	783310055082	Grip Assy, 400-500 Short
GG1-1/0M	783310054719	Grip Assy, 1-1/0 Medium	GG400-500M	783310055099	Grip Assy, 400-500 Medium
GG1-1/0L	783310054726	Grip Assy, 1-1/0 Long	GG400-500L	783310055105	Grip Assy, 400-500 Long
GG1-1/0XL	783310054733	Grip Assy, 1-1/0 Extra Long	GG400-500XL	783310055112	Grip Assy, 400-500 Extra Long
GG2/0-4/0XS	783310054740	Grip Assy, 2/0-4/0 Extra Short	GG600-750XS	783310055129	Grip Assy, 600-750 Extra Short
GG2/0-4/0S	783310054771	Grip Assy, 2/0-4/0 Short	GG600-750S	783310055136	Grip Assy, 600-750 Short
GG2/0-4/0M	783310054788	Grip Assy, 2/0-4/0 Medium	GG600-750M	783310055143	Grip Assy, 600-750 Medium
GG2/0-4/0L	783310054795	Grip Assy, 2/0-4/0 Long	GG600-750L	783310055150	Grip Assy, 600-750 Long
GG2/0-4/0XL	783310054801	Grip Assy, 2/0-4/0 Extra Long	GG600-750XL	783310055167	Grip Assy, 600-750 Extra Long
GG250-350XS	783310055020	Grip Assy, 250-350 Extra Short	GG1000XS	783310055174	Grip Assy, 1000 Extra Short
GG250-350S	783310055037	Grip Assy, 250-350 Short	GG1000S	783310055181	Grip Assy, 1000 Short
GG250-350M	783310055044	Grip Assy, 250-350 Medium	GG1000M	783310055211	Grip Assy, 1000 Medium
GG250-350L	783310055051	Grip Assy, 250-350 Long	GG1000L	783310055228	Grip Assy, 1000 Long
GG250-350XL	783310055068	Grip Assy, 250-350 Extra Long	GG1000XL	783310055235	Grip Assy, 1000 Extra Long

Note: Greenlee basket and set-screw style grips are not affected by this Quality Letter.

GATOR GRIP SLEEVE CRIMP INSPECTION

STEP 1 – Stop using all Gator Grips in your possession and isolate. Inspect the crimp sleeve on the lanyard of the Gator Grip(s) according to below:

(I.) Firmly tug the lanyard wire at the sleeve connection to determine if any movement of the sleeve or lanyard wire is observed, and (continued)

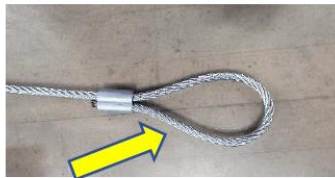


Fig 1.
Firmly tug lanyard wire.
Watch for Movement.

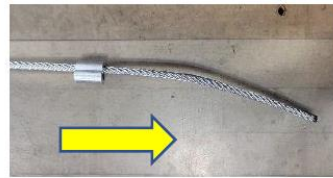


Fig 2.
If lanyard wire pulls
out/moves Do Not Use.

(II.) Inspect the sleeve for correct complete crimp. Look for space between the lanyard wire and the sleeve as pictured below.



Fig 3.
Sleeve Without Crimp Example
Do Not Use

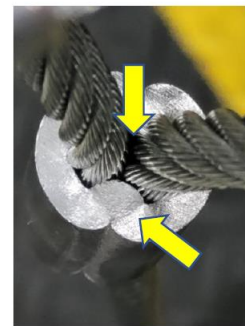


Fig 4.
Correctly Crimped Sleeve
Acceptable for Use

STEP 2 –If the lanyard pulls out of the sleeve, the sleeve can move, or there are gaps in the sleeve's crimp, do not use the Gator Grip. Do not attempt to crimp the sleeve on your own. Immediately contact Greenlee for return assistance.

If the sleeve on the wire lanyard is correctly crimped (Fig 4.) and has no movement, your Gator Grip is not affected, and such Gator Grip may be used as intended.

To arrange for return of your Gator Grips please contact Greenlee by phone at 1-800-435-0786 and ask to speak to Heather Severson regarding the Gator Grip Quality Letter or email heather.severson@emerson.com for assistance.